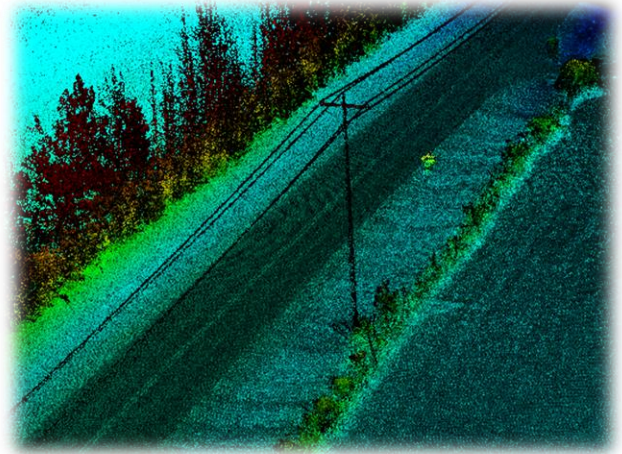


Snoopy VUX Highway Mapper

Snoopy VUX Highway Mapper

The Snoopy VUX combines high performance GNSS IMU position and attitude measurement unit with a laser scanner device to obtain three - dimensional point cloud information of structure such as high density and high precision ground surface and buildings.

The integrated GNSS IMU device adopts position and attitude in real time, corresponding to all GNSS such as GPS (USA), GLONASS (Russian), GALILEO (EU), Beidou (China), and QZSS (Japan). Furthermore, in post-processing calculation processing, not only kinematic baseline processing but also use VRS of state of art technology are made, and accuracy of position and orientation is optimized with high accuracy.



Point Cloud



The **Snoopy VUX** is a high accuracy, lightweight, compact and rugged laser scanner that is easily mountable to most types of moving platforms such as cars, helicopters, UAV's, trains and robots, etc.

Specifications

Survey-Grade Accuracy: 20mm @230 m 300 kHz 1 sigma

- Dimensions/Weight: 227 x 180 x 125 mm
Weight: 4.5 kg. (no antenna/battery)
- Power Consumption: 16 Watts @ 100 scans/second
Voltage Input: 11-34 VDC
- scan speed up to 200 scans / second
measurement rates up to 550,000 meas./sec
(@ 550 kHz PRR & 360° FOV)
- Field of View: Up to 360° for practically unrestricted data acquisition
- L1/L2 PPK+INS: GPS+GLONASS, SBAS, GALILEO, Beidou, QZSS
- Single Antenna
Internal Storage: Lasts several days
Virtually Unlimited Removal Storage
- RIEGL VUX-1UAV: 5 target echoes, 100 scans/sec, max range 280m range, 200kHz
- Quick Release Mount

Snoopy VUX Highway Mapper



GNSS IMU (Novatel)

Position Accuracy:	0.02 – 0.015 5cm (Post-Processing)
Velocity:	0.010 cm (Post -processing)
Roll and Pitch:	0.015 deg
Heading	0.035deg
Data Update rate:	200Hz

Options

Mobile Mapping:	Spherical Camera unit, Vehicle Installation brackets, Camera data recorder unit, GNSS antenna
UVA Camera:	Sony aR7III, Sony RX0, Point Grey Blackfly

Software

- 20 mm survey-grade accuracy
- Providing echo signal digitization/online waveform
- Field-of-view up to 330° for practically unrestricted data acquisition
- Easily mountable to most types of moving platforms