



# SURVEYOR 32



**300+ Points**  
Per square meter



**AGL**  
120 Meters



**200+ Acres**  
One Flight



**<2.0 cm**  
@40M AGL



**1.953kg**

**LIDAR USA**



The Surveyor 32 UAV is specially designed for UAV missions and mounts to the DJI M300, M600pro, ALTA X, SL800, and other popular industrial drones. And can be upgraded to a ground-based car or backpack collection system at any time.



**Storage:**

- External Storage (128gb to 256gb)

**Camera:**

- Single 24MP with 16MM lens
- DUAL 24MP with 25mm lens

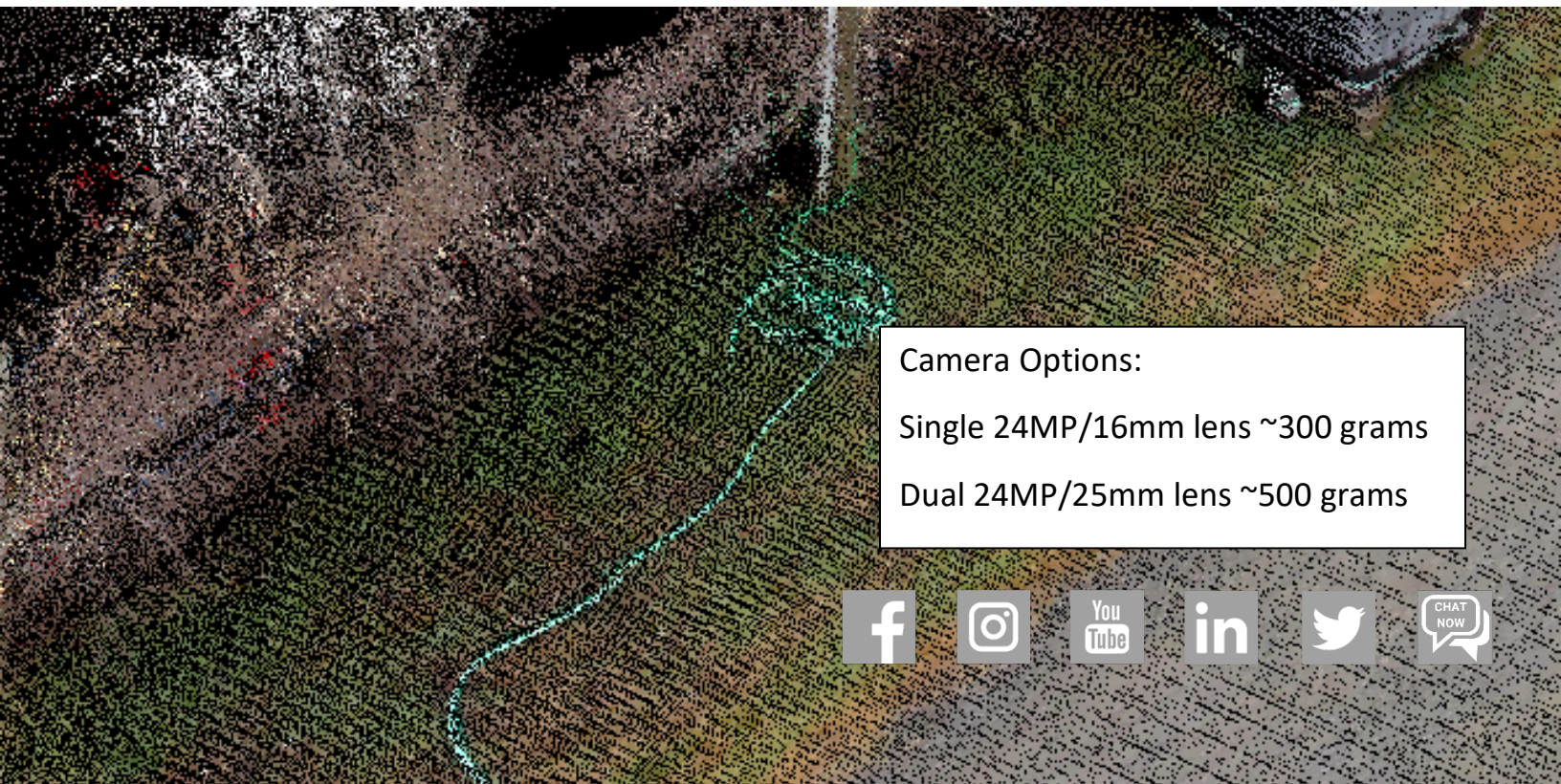


## GNSS IMU Comparison

Post-Processed	Snoopy IMU	APX20
Position Accuracy (m)	<b>0.01-0.005</b>	0.02-0.015
Velocity (m/s)	<b>0.010</b>	0.010
Roll & Pitch (deg)	<b>0.006</b>	0.015
True Heading (deg)	<b>0.030</b>	0.035
Data Update Rate (Hz)	<b>200</b>	200

## LiDAR Specs

- 32 Channels
- Two Returns
- 1,280,000 points per second (dual return)



### Camera Options:

Single 24MP/16mm lens ~300 grams

Dual 24MP/25mm lens ~500 grams



# Software

Our Software has been developed and fine-tuned over the course of 20 years, led by our founder and CEO, Jeff Fagerman. As a Licensed Land Surveyor and Computer Engineer, Jeff created ScanLook PC to be user friendly and powerful. Employing the latest machine learning our software allows customers to process LIDAR Data very fast, much faster than conventional Photogrammetry.

We provide the complete software suite for acquisition, georeferencing, data merging, post-processing, and export.

LiDARUSA ScanLook PC, creates control point from the raw data, and uses a state of the art control point adjustment algorithm, the end result is a control point adjusted georeferenced point cloud. Output formats are numerous; las, laz, txt, XYZ, e57....

IE PPK, to create trajectory and post-process inertial data and GNSS data.

Export directly to topoDOT, AEC, Bentley, Microstation, Trimble Business Center, and VisionLiDAR formats to name a few.

## OTHER 3D MAPPING SOLUTIONS:



**REVOLUTION 120**

 200+ Points per square meter	 AGL 100-1200m AGL	 100+ Acres one flight	 3.8 cm @ 50 m AGL	 1.78kg
------------------------------------------------------------------------------------------------------------------------	-------------------------------------------------------------------------------------------------------------	-----------------------------------------------------------------------------------------------------------------	-------------------------------------------------------------------------------------------------------------	-----------------------------------------------------------------------------------------------

[Download Datasheet](#)



**20th Anniversary LIDAR USA**

**One System. Multiple Uses. Yes, You Can Do Both!**


**SNOOPY VUX - RIEGL**

Empower your business with the most powerful 3D mapping solution. LIDAR USA's SNOOPY VUX - RIEGL is the most powerful 3D mapping solution. LIDAR USA's SNOOPY VUX - RIEGL is the most powerful 3D mapping solution. LIDAR USA's SNOOPY VUX - RIEGL is the most powerful 3D mapping solution.



**Surveyor 32.  
One System.  
Dual Use.  
Yes, You Can Do Both!**

Designed to easily move from a UAV to a ground vehicle. Optimize your ROI.  
Spend more time scanning, only 30 seconds to initialize.  
We Make 3D Mapping Easy. Learn more on our website. [www.LIDARUSA.com](http://www.LIDARUSA.com)

**LIDAR USA** 

---

**3D MAPPING SOLUTIONS**



# SURVEYOR 32



## MULTIPLE USE

Maximize your ROI, designed to be used on just about any UAV, Car, Backpack or Handheld application.



## POINT DENSITY

Punch through the vegetation with high detail on powerlines, curbs, and under forest detail. 300 to 600+ PSM.



## FLYING HEIGHT

At 80 -120 meters AGL, this system can fly and map over most obstacles with ease. See targets and powerlines



## COVERAGE AREA

Easily capture 200+ acres with 25 minute flight time and proper overlap. Cover the whole job in one flight.



## RETURNS

2 returns allows better vegetation penetration with high detail on powerlines, curbs, and under forest detail.



## WEIGHT

At 1.953 kg this system works with small or large drones that is fitted with a quick release mounting for MMS jobs.



## ACCURACY

At 40 meters AGL the accuracy is less than 2.0 cm making survey grade providing a detailed and accurate point cloud.