

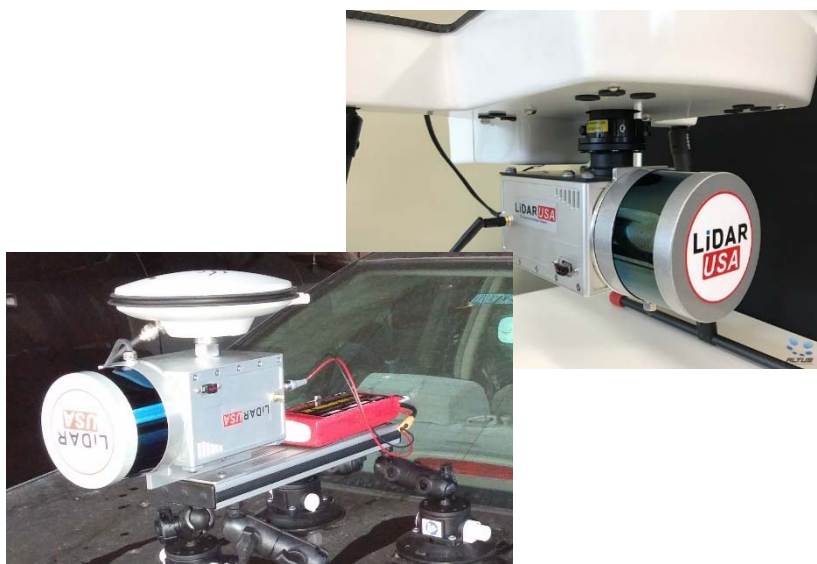
Snoopy A-Series

Ready-to-Fly & Ready-to-Scan UAV Package



Specifications

- System Accuracy -- 4.6cm +/- Accuracy @ 50m
- Dimensions / Weight:
 - 3.5 inches tall
 - 11.75 inches long
 - 4.375 inches wide
 - Weight: 2kg
- INS Snoopy L1/L2
 - L1/L2 GPS+GLONASS (or Beidou)
 - SBAS
 - Single Antenna
- Power Consumption: 25 Watts
- Voltage Input: 10-30VDC
- Internal storage for several days
- Virtually unlimited removable storage
- Quick release mount
- Velodyne VLP-16 or LITE
 - 300,000 points/sec
 - 16 individual lasers
 - 15 degree Vertical FOV
 - 360 degree Horizontal FOV
 - +/- 4 cm accuracy
 - 100 m range



Software

- Generate trajectory in any coordinates
- LAS/LAZ/E57 and other file format outputs
- Point cloud filtering
- Control point adjustment tool
- Coordinate measurement update tool

Snoopy A-Series

HiWay Mapper Package + UAV Package



"Everything you need to take your company to the next level"

Specifications

- System Accuracy -- 4.6cm +/- Accuracy @ 50m
- Dimensions / Weight:
 - 3.5 inches tall
 - 11.75 inches long
 - 4.375 inches wide
 - Weight: 2kg
- INS Snoopy L1/L2
 - L1/L2 GPS+GLONASS (or Beidou)
 - SBAS
 - Single Antenna
- Power Consumption: 25 Watts
- Voltage Input: 10-30VDC
- Internal storage for several days
- Virtually unlimited removable storage
- Quick release mount
- Velodyne VLP-16 or LITE
 - 300,000 points/sec
 - 16 individual lasers
 - 15 degree Vertical FOV
 - 360 degree Horizontal FOV
 - +/- 4 cm accuracy
 - 100 m range

Software

- Generate trajectory in any coordinates
- LAS/LAZ/E57 and other file format outputs
- Point cloud filtering
- Control point adjustment tool
- Coordinate measurement update tool

Weighing in at only 1.8kg, Snoopy A-Series is a smaller, evolved version of our Snoopy. This unit is also configurable but is designed to be an extremely accurate solution for multi-vehicle mounting. The A-Series is light-weight and easy to use. With just a click of a button on your smartphone you can scan over the edge of a boat, the front of a motorcycle, the belly of a drone, the back of a sedan, the side of a train, on top of a back-pack... Well, you get the picture! You can scan anywhere with this little guy.



Snoopy A-Series



Weighing in at only 1.8kg, Snoopy A-Series is a smaller, evolved version of our Snoopy. This unit is also configurable but is designed to be an extremely accurate solution for multi-vehicle mounting. The A-Series is light-weight and easy to use. With just a click of a button on your smartphone you can scan over the edge of a boat, the front of a motorcycle, the belly of a drone, the back of a sedan, the side of a train, on top of a back-pack... Well, you get the picture! You can scan anywhere with this little guy.

Specifications

- System Accuracy -- 4.6cm +/- Accuracy @ 50m
- Dimensions / Weight:
 - 3.5 inches tall
 - 11.75 inches long
 - 4.375 inches wide
 - Weight: 2kg
- INS Snoopy L1/L2
 - L1/L2 GPS+GLONASS (or Beidou)
 - SBAS
 - Single Antenna
- Power Consumption: 25 Watts
- Voltage Input: 10-30VDC
- Internal storage for several days
- Virtually unlimited removable storage
- Quick release mount
- Velodyne VLP-16 or LITE
 - 300,000 points/sec
 - 16 individual lasers
 - 15 degree Vertical FOV
 - 360 degree Horizontal FOV
 - +/- 4 cm accuracy
 - 100 m range

Software

- Generate trajectory in any coordinates
- LAS/LAZ/E57 and other file format outputs
- Point cloud filtering
- Control point adjustment tool
- Coordinate measurement update tool

